

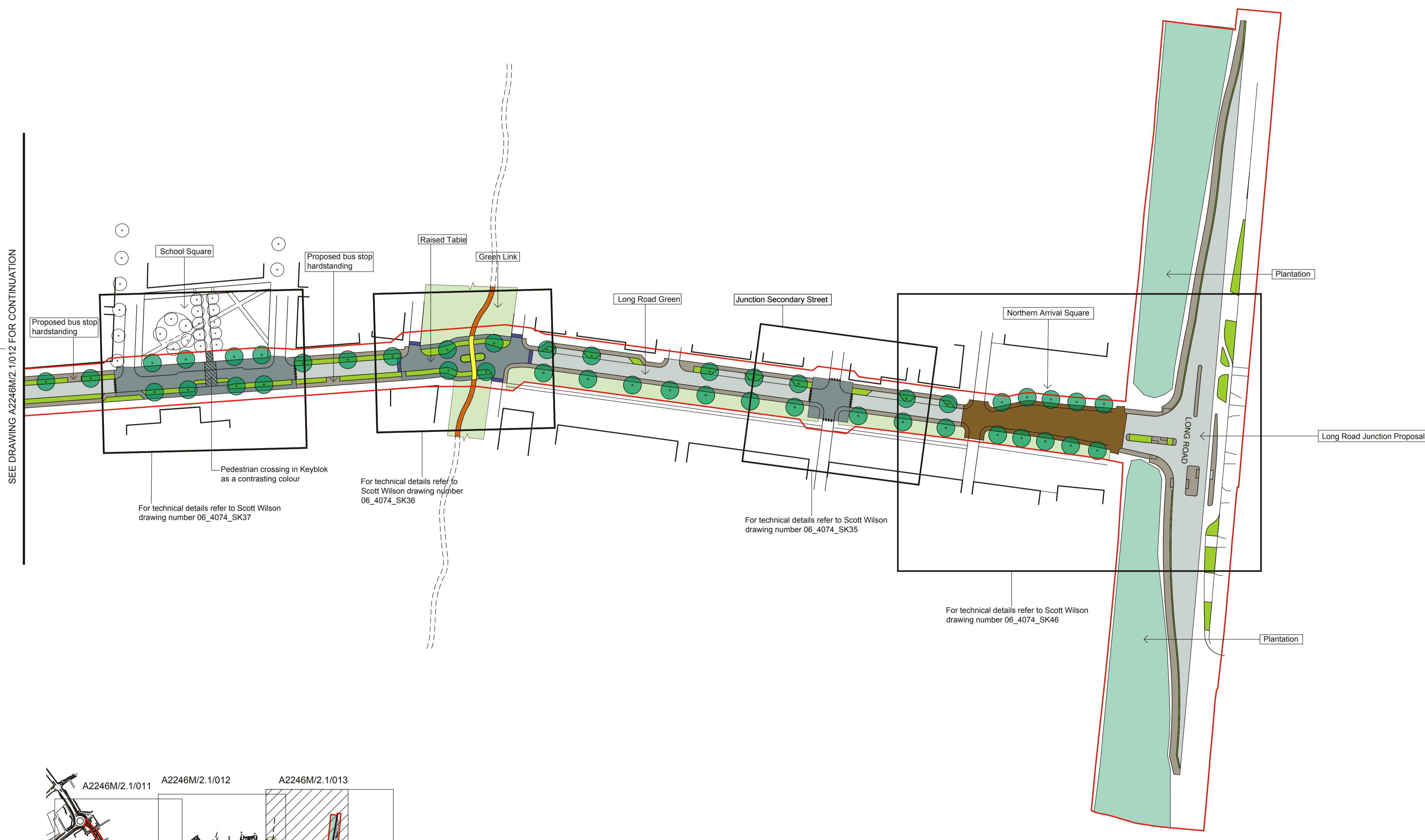
Key

Application site boundary

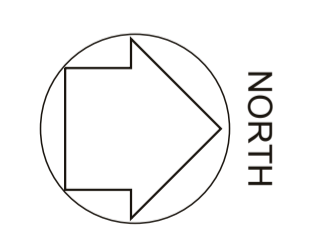
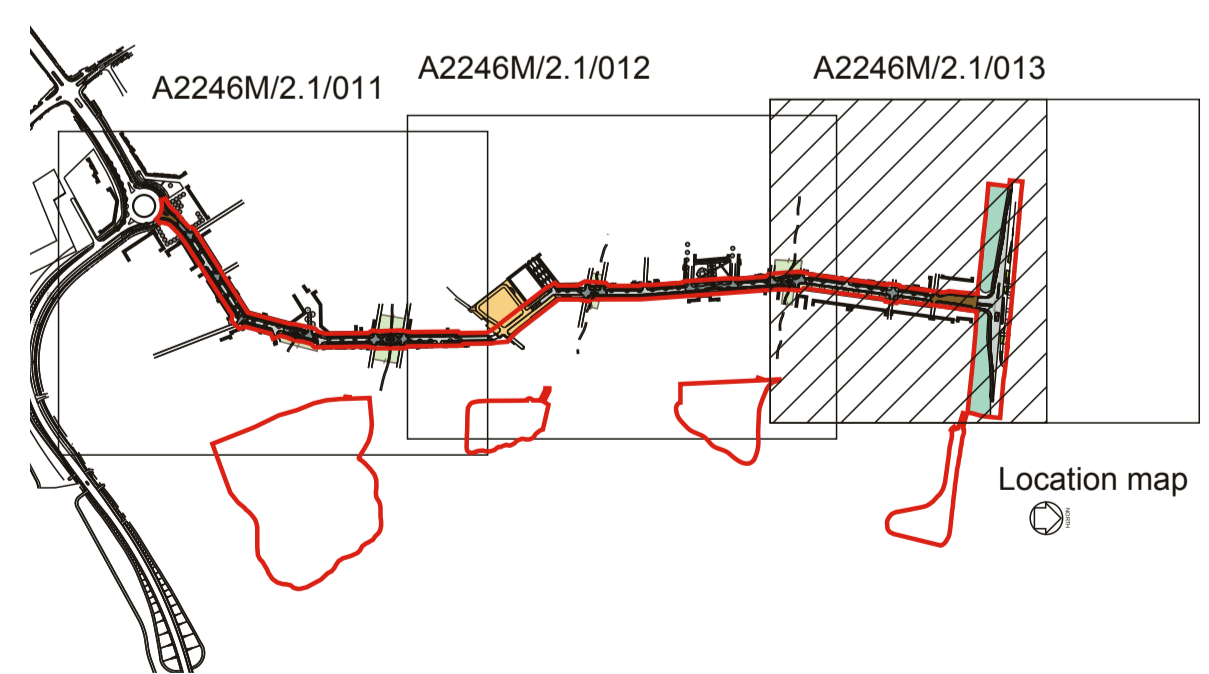
Proposed Materials Palette

- Carriageway**
40mm thick Hot Rolled Asphalt (HRA) 14mm aggregate designation to Column 3/2 of table 3 of BS594
- Footway**
25mm thick Dense Bitumen Macadam (DBM) 6mm aggregate in accordance with BS 4987-1 clause 7.5
- Carriageway - Surface change**
Keyblok 'Charcoal' with granite sets for rumble strip at entry and exit. (Marshalls or similar approved)
- Carriageway - Local Centre**
Pallas Anthracite Basalt blocks with light granite blocks for contrasting banding (Marshalls or similar approved)
- Note: for detailed Highway materials specification see engineers drawings
- Carriageway - Arrival Squares**
Pallas Anthracite Basalt blocks with light granite blocks for contrasting banding (Marshalls or similar approved), banding within Northern Arrival Square only.
- 75mm ramp to raised table in granite sets**
- Delineation strip**
4 rows of tumbled granite sets
- Cycle and pedestrian crossing**
Coloured hot rolled asphalt or as specified on engineers drawings
- Cycle and footways in open space**
Compacted gravel or as specified on engineers drawings
- Delineation Area**
Pallas Light Granite blocks (Marshalls or similar approved)
- Amenity planting within Highway**
- Grassed area**
- Street trees**
Silver Lime *Tilia tomentosa*
(max. 35cm girth, Semi-mature)

Note: Alternative species to be specified for trees in centre of road through Green Link and in Neighbourhood Square.



SEE DRAWING A2246M/2.1/012 FOR CONTINUATION



- Note:**
1. For Primary Route General Arrangement refer to Scott Wilson drawing number 06_4074_CL_101- 102.
 2. All drawn information outside the red line is for indicative purposes only.